

Manufactured by:
AeroLEDs LLC
8475 W. Elisa St.
Boise, ID 83706-6700
Phone: (208) 850-3294

www.aeroleds.com
sales@aeroleds.com

Installation Guide:
Sunbeacon II
P/N 01-2200-A Red LED Beacon
P/N 01-2200-B White LED Beacon
P/N 01-2200-C Red/White LED Beacon



Exceeds 150 effective candela for red and red/white beacon, exceeds 400 effective candela for white beacon.

Operating Instructions:

Operational Voltage: 14 & 28 Volt Systems
Red Beacon Average Current: 0.5A at 14V, 0.25A at 28V
Red Beacon Peak Current: 3.3A at 14V for 0.2 seconds
White Beacon Average Current: 0.8A at 14V, 0.4A at 28V
White Beacon Peak Current: 6A at 14V for 0.2 seconds

EQUIPMENT LIMITATIONS:

Aircraft for which type certificate was applied for after April 1, 1957 to August 11, 1971:

The anti-collision system must produce a minimum of 100 effective candelas in Aviation Red or White, 360° around the vertical axis, 30° above and below the horizontal plane. The Sunbeacon II meets this requirement.

Aircraft for which type certificate was applied for after August 11, 1971:

The anti-collision system must produce a minimum of 400 effective candelas in Aviation Red or White, 360° around the vertical axis, 30° above and below the horizontal plane. The white Sunbeacon II will meet this requirement.

Rotorcraft for which type certificate was applied for after February 5, 1976:

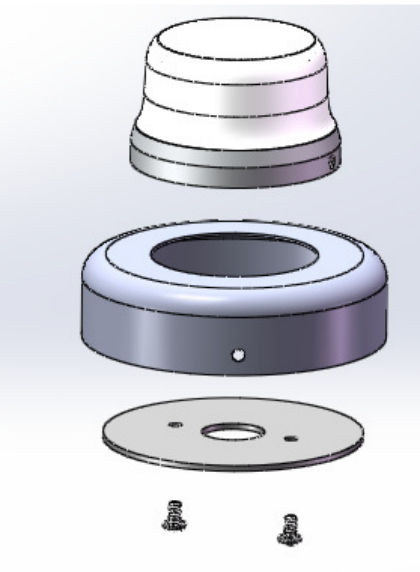
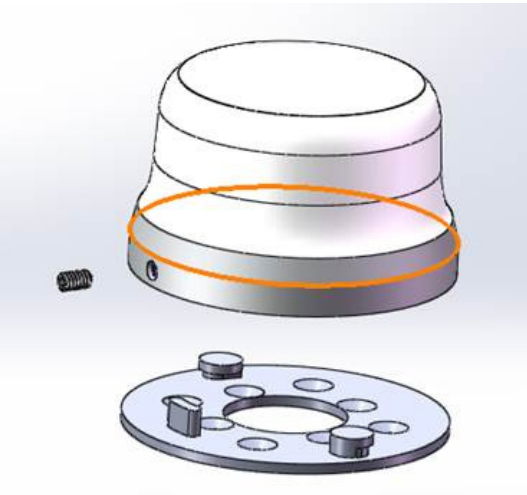
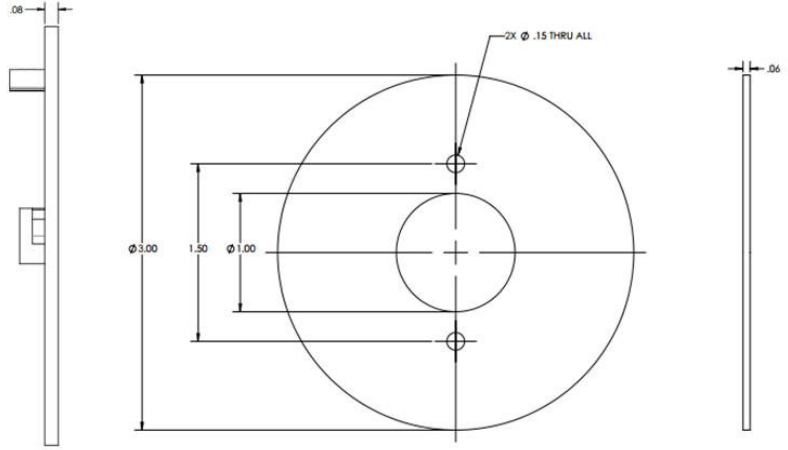
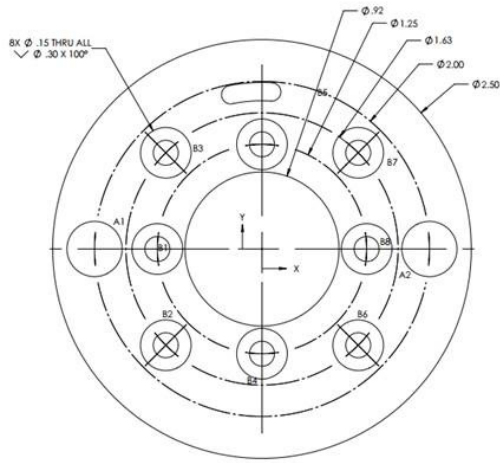
The anti-collision system must produce a minimum of 150 effective candelas in Aviation Red, 360° around the vertical axis, 30° above and below the horizontal plane. The Sunbeacon II meets this requirement.

CONTINUED AIRWORTHINESS:

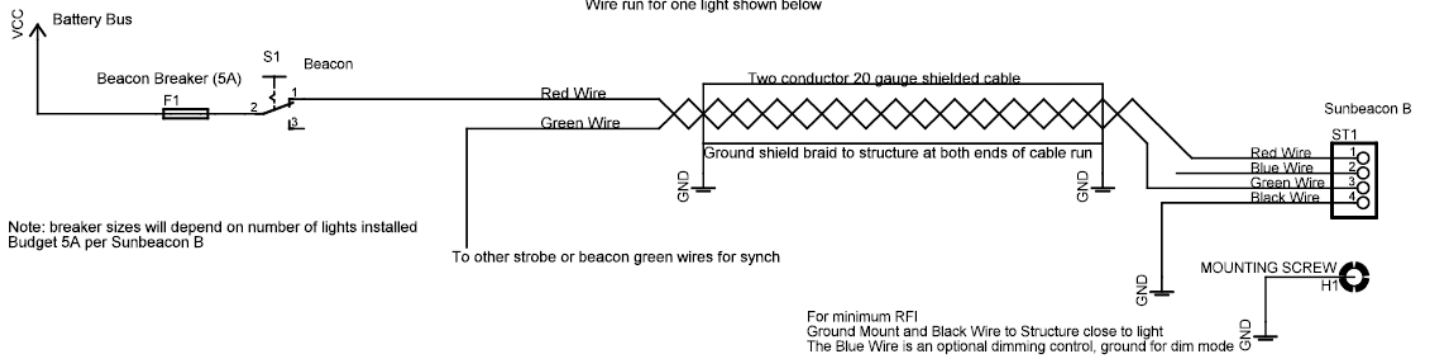
The Sunbeacon II series LED beacon assembly is designed with 24 LEDs mounted beneath the anti-collision lenses. Should any one LED fail, the unit must be repaired or replaced. View LEDs with welding goggles for eye safety.

INSTALLATION PROCEDURES:

1. The installation procedure described in the following text is for a single light installation, but the procedure is identical for multiple light installations.
2. Determine which mounting type shown in the installation diagram on page 2 is required for the mounting location. The bracket can be used to mark the mounting hole locations. The brackets are ordered separately, depending on the mounting configuration.
3. By design, the twist lock Mounting Bracket locks into the Sunbeacon II product body.
4. Mount the twist lock bracket using four 6-32 100 degree countersunk screws. **Ensure that the mounting bracket is grounded to structure via the mounting screws.** If necessary, route a ground strap from one mounting screw to structure ground or terminate the ground shield from the shielded wire bundle to a mounting screw. Proper chassis ground is required for minimum RFI and for protection from direct lighting effects.
5. Connect the red wire to switched power for the beacon light, connect the black wire to aircraft ground, and connect the green wire to the synchronization wire from other installed light(s). The blue wire is an optional dimming control that reduces the output to 5% when it is grounded. It is recommended that the attached wiring diagram be followed for minimum RFI.
6. Attach the light to the mounting bracket and anchor in place with the 8-32 hex head set screw (provided) that inserts into the rear of the light.
7. Check all avionics systems for interference from this installation.
8. A flight check should be performed by a properly certified pilot.



Recommended Wiring for Sunbeacon B Light
Wire run for one light shown below



Note: breaker sizes will depend on number of lights installed
Budget 5A per Sunbeacon B